

Holy Spirit, Truth Divine

Samuel Longfellow, 1819-1892  
From the Methodist Hymnal, 1964

Tune: Canterbury, Orlando Gibbons, 1583-1625  
Arrangement Copyright, 1969 by Wayne Hooper

1. Ho - ly Spir - it, Truth di - vine, Dawn up - on this soul of mine;

Word of God and in - ward light, Wake my Spir - it, clear my sight.

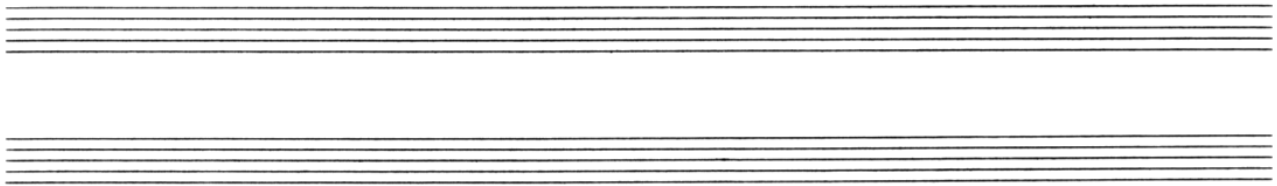
2. Ho - ly Spir - it, love di - vine, Glow with - in this heart of mine;

Kin - dle ev - ery high de - sire; Per - ish self in Thy pure fire. *rit.*

3. Ho - ly Spir - it, power di - vine; Fill and nerve this will of mine;

By Thee may I strong - ly live, Brave - ly bear, and no - bly strive. *rit.*

Holy Spirit, Truth Divine (2)



Musical notation for the first system. The treble clef staff begins with a dynamic marking 'F' and a star symbol. The bass clef staff begins with a dynamic marking 'F'. The lyrics 'Ho - ly Spir - it, Right di - vine, King with - in, my con - science reign;' are written below the notes. A 'CRESC.' marking is placed above the treble staff in the second measure.

Musical notation for the second system. The treble clef staff begins with a dynamic marking 'F'. The bass clef staff begins with a dynamic marking 'F'. The lyrics 'Be my Lord, and I shall be Firm - ly bound, for - ev - er free!' are written below the notes. A 'STRONG' marking is placed above the treble staff in the second measure.

