



WHAT KIND O' SHOES YOU GOIN' TO WEAR

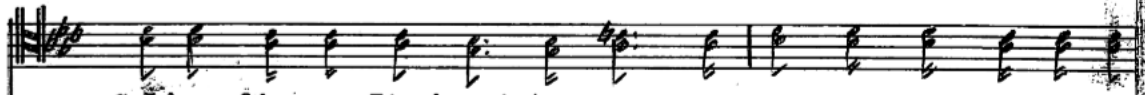
Arr.WHH
Spiritual




What kind o' shoes you goin' to wear? Gol - den slip-pe
What kind o' robe you goin' to wear? Long white robe
What kind o' crown you goin' to wear? Star - ry crown




What kind o' shoes you goin' to wear? Gol - den slip-per
What kind o' robe you goin' to wear? Long white robe
What kind o' song you goin' to sing? Bran' new song



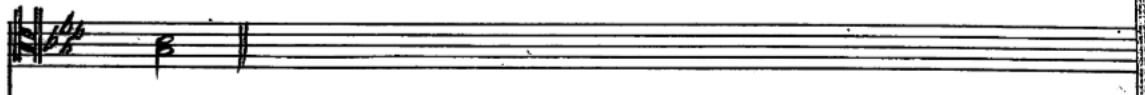
Golden slippers I'm boun' to wear,
Long white robe I'm boun' to wear, To out-shine the glittering
Bran' new song I'm boun' to sing,



sun. Yes, Yes, Yes, My Lord, I'm goin' to join the



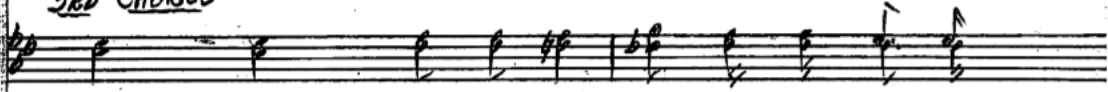
heavenly choir, Yes, Yes, Yes, My Lord, I'm a soldier of the



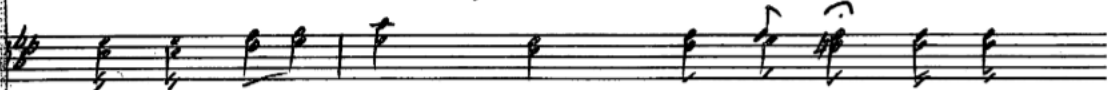
cross.

WHAT KIND O' SHOES YOU GOIN' TO WEAR (CONT)

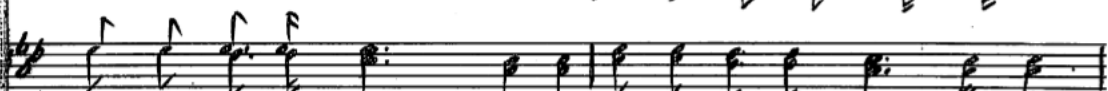
3RD CHORUS



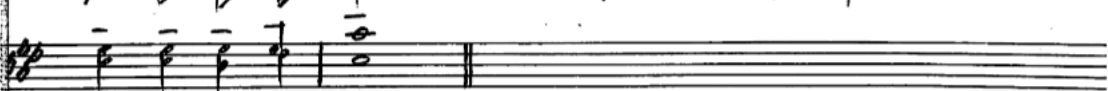
Yes, Yes, yes my Lord, I'm goin' to join the
Yes, yes, yes, yes, yes, my Lord,



heavenly choir, Yes, yes, yes, my Lord, I'm a
Yes, yes, yes, yes, yes, my Lord,

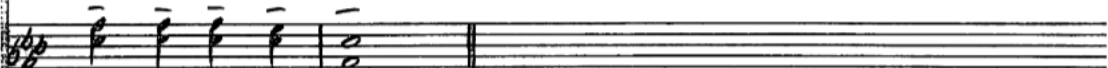


sol-dier of the cross. I'm a soldier of the cross. I'm a



soldier of the cross.

© 1952 by Wayne Hooper



Public Domain