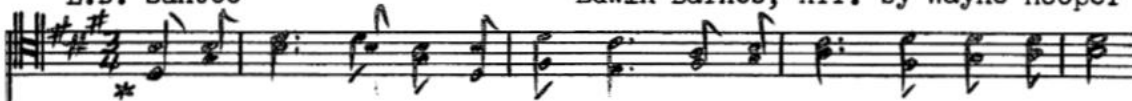


When the King Shall Claim His Own

L.D. Santee

Edwin Barnes, Arr. by Wayne Hooper



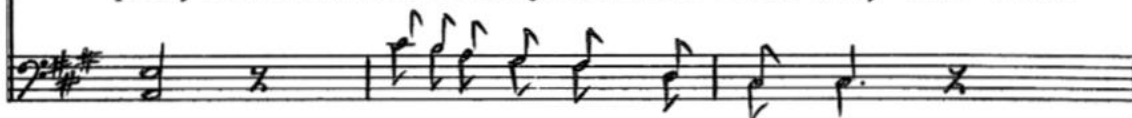
In the glad time of the har-vest, In the grand mil-lennial year



When the King shall take His scep-ter, And to judge the world ap



pear, Earth and sea shall yield their treas-ure, All shall



stand be-fore the throne; Just a-wards will then be giv-en,

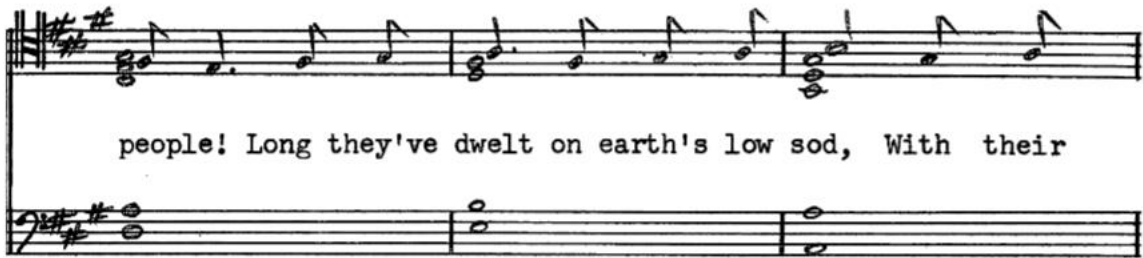


When the King shall claim His own. 2. O the rap-ture of His

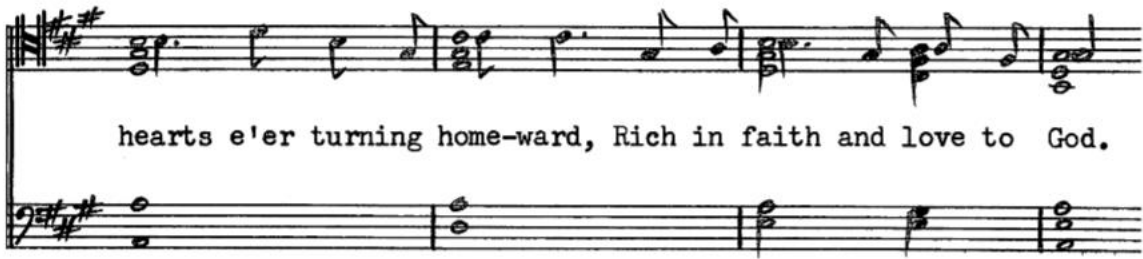


Copyright 1886, by Edwin Barnes
Church Hymnal, PUBLIC DOMAIN
Arrangement Copyright 1959, by Wayne Hooper

When the King Shall Claim His Own (2)

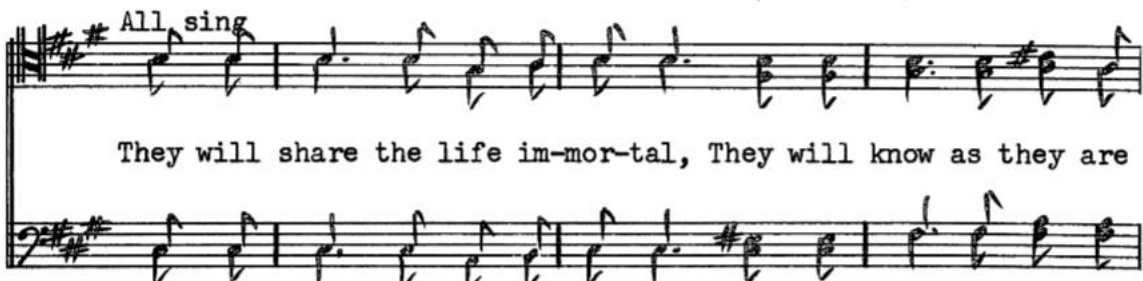


people! Long they've dwelt on earth's low sod, With their

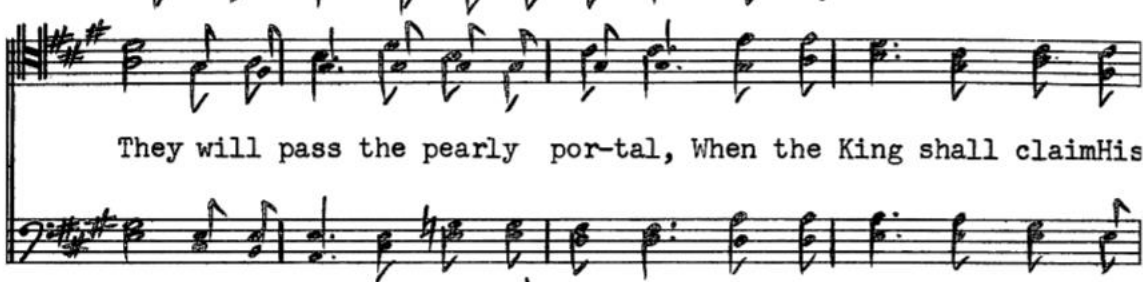


hearts e'er turning home-ward, Rich in faith and love to God.

All sing

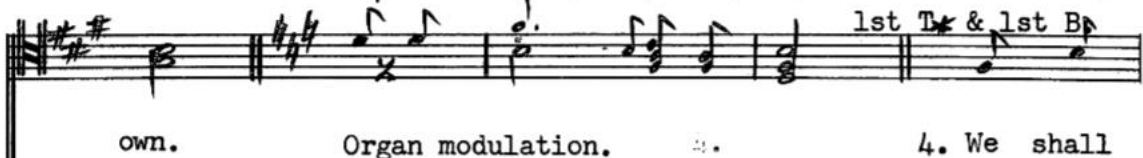


They will share the life im-mor-tal, They will know as they are

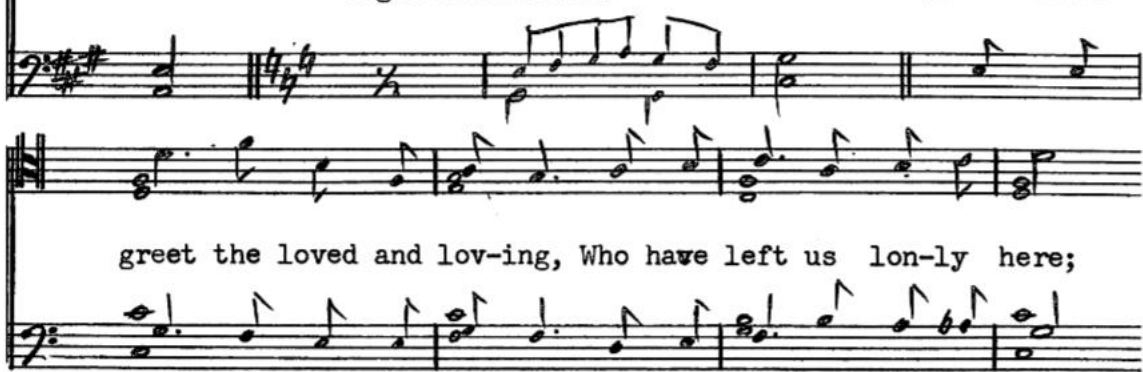


They will pass the pearly por-tal, When the King shall claim His

own. Organ modulation. 4. We shall



1st Tr & 1st Bp



greet the loved and lov-ing, Who have left us lon-ly here;

When the King Shall Claim His Own (3)

Ev-ery heart-ache will be ban-ished, When the Saviour shall ap-
All sing
pear; Nev-er grieved with sin or sorrow, Nev-er wear-y or a-
NE-VER GRIEVED *NEVER WEAR-Y*
lone; O, we long for that glad mor-row When the King
When the King
shall claim His own.

Organist note; The chords given for the solo in stanza two, and for the duet in stanza four, are for basic harmony only. Feel free to fill in appropriate accompaniment. WH