

# FOI ASSIM

375

Throught It All

Andraé Crouch

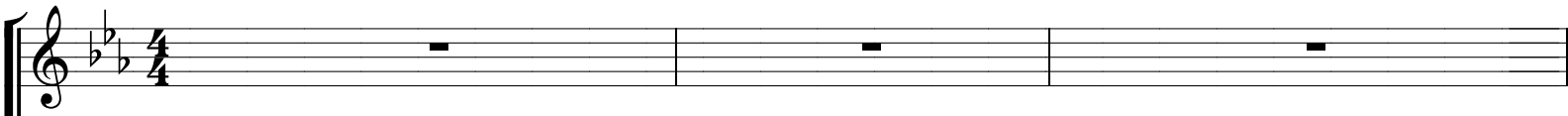
Arranjo-Marcelo Carvalho

27/07/98

1

2

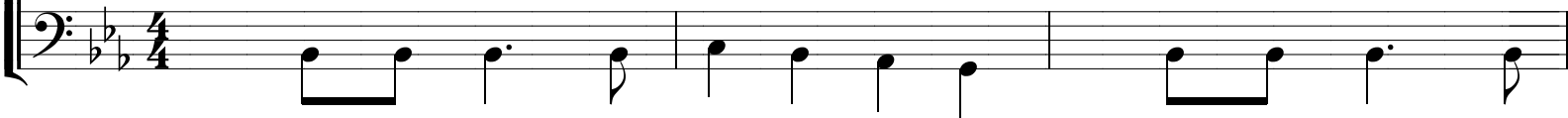
3



Em tris - te - za

eu vi - vi - a

O\_a - ma - nhã me



4

5

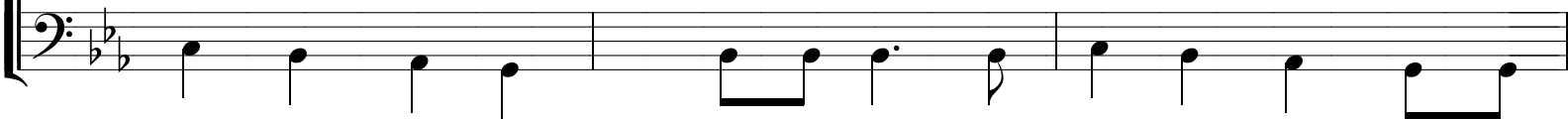
6



e - ra\_es - cu - ro

Não sa - bi - a

on - de meu pen - sa -



7

8

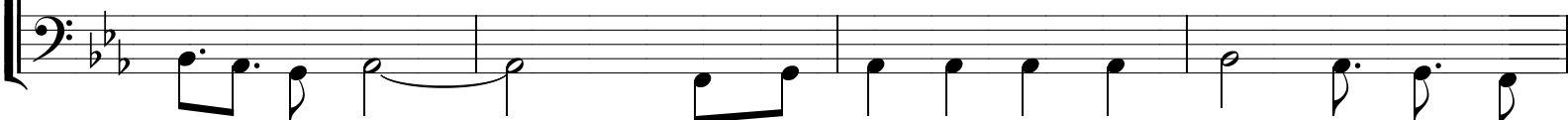
9

10



men - to pôr

Mas em to - da pro - va - ção Je - sus pro -



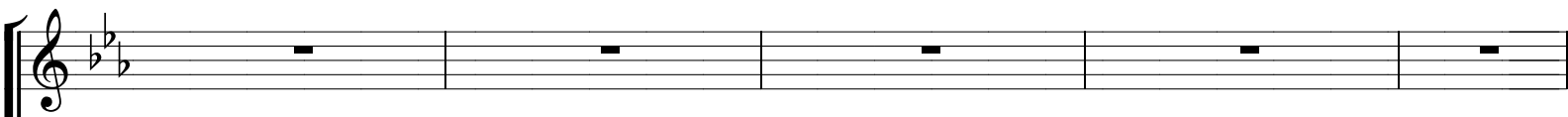
11

12

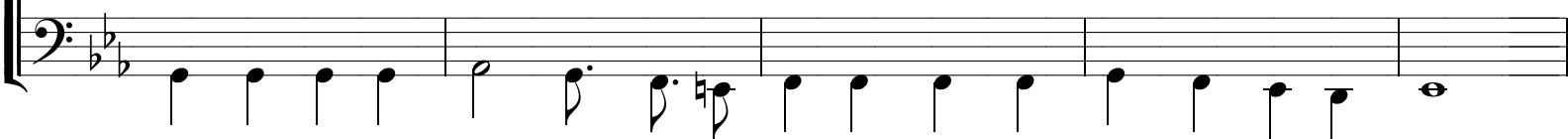
13

14

15



veu con - so - la - ção E\_o meu vi - ver tor - nou mais for - te\_o co - ra - ção



16 17 18

Foi as - sim

19 20 21

Foi as - sim Que\_a - pren - di a ter con -

22 23 24

fian - ça Em Cris - to meu Se - nhor

25 26 27 28

Foi as - sim Foi as - sim Que\_a - pren -

29 30 31

di a de - pen - der do\_a - mor de Deus

32 33 34

Uh Gra - ças dou por mi - nhas do - res

35 36 37

Uh E tor - men - tos que\_en - fren - tei Uh A - tra - vés do

38 39 40

meu Uh so - frer pu - de\_a - té Uh com - preen - der E sen -

41 42 43

ti bem jun - to\_a mim O\_a - mor de Cris - to\_a me gui -  
 Ah Ah

44 45 46

ar Em se - gu - ran - ça no ca - mi - nho ru - mo\_a  
 Ah Ah

47 48 49 50

lar Foi as - sim  
 Ah

51 52 53

Foi as - sim Que\_a - pren - di a ter con -

54 55 56

fian - ça em Cris - to meu Se - nhor

Detailed description: This system contains measures 54, 55, and 56. The music is in a 4/4 time signature with a key signature of three flats (B-flat, E-flat, A-flat). The melody is written on a treble clef staff, and the bass line is on a bass clef staff. Measure 54 starts with a half note G3, followed by quarter notes A3, B3, and C4. Measure 55 has a half note D4, followed by quarter notes E4, F4, and G4. Measure 56 has a half note A4, followed by a quarter rest. A black dot is placed above the first measure of this system.

57 58 59 60

Foi as - sim Foi as - sim Que\_a - pren -

Detailed description: This system contains measures 57, 58, 59, and 60. The melody is on a treble clef staff, and the bass line is on a bass clef staff. Measure 57 has a half note G3, followed by quarter notes A3, B3, and C4. Measure 58 has a half note D4, followed by quarter notes E4, F4, and G4. Measure 59 has a half note A4, followed by quarter notes B4, C5, and D5. Measure 60 has a half note E5, followed by quarter notes F5, G5, and A5. A black dot is placed above the first measure of this system.

61 62 63 64

di a de - pen - der do\_a - mor de Deus

Detailed description: This system contains measures 61, 62, 63, and 64. The melody is on a treble clef staff, and the bass line is on a bass clef staff. Measure 61 has a half note G3, followed by quarter notes A3, B3, and C4. Measure 62 has a half note D4, followed by quarter notes E4, F4, and G4. Measure 63 has a half note A4, followed by quarter notes B4, C5, and D5. Measure 64 has a half note E5, followed by quarter notes F5, G5, and A5. A key signature change to two sharps (F# and C#) occurs at the end of measure 64. A black dot is placed above the first measure of this system.

65 66

Foi as - sim

Detailed description: This system contains measures 65 and 66. The melody is on a treble clef staff, and the bass line is on a bass clef staff. Measure 65 has a half note G3, followed by quarter notes A3, B3, and C4. Measure 66 has a half note D4, followed by quarter notes E4, F4, and G4. A key signature change to two sharps (F# and C#) occurs at the beginning of measure 65. A black dot is placed above the first measure of this system.

67 68 69

Foi as - sim Que\_a - pren - di a ter con -

Detailed description: This system contains measures 67, 68, and 69. The music is in a treble and bass clef with a key signature of three sharps (F#, C#, G#). Measure 67 features a dotted quarter note G4 in the treble and a dotted quarter note F4 in the bass. Measure 68 has a half note G4 in the treble and a half note F4 in the bass. Measure 69 consists of a quarter note G4 in the treble and a quarter note F4 in the bass.

70 71 72

fian - ça em Cris - to meu Se - nhor

Detailed description: This system contains measures 70, 71, and 72. Measure 70 has a quarter note G4 in the treble and a quarter note F4 in the bass. Measure 71 has a quarter note G4 in the treble and a quarter note F4 in the bass. Measure 72 has a quarter note G4 in the treble and a quarter note F4 in the bass.

73 74

Foi as - sim

Detailed description: This system contains measures 73 and 74. Measure 73 has a dotted quarter note G4 in the treble and a dotted quarter note F4 in the bass. Measure 74 has a half note G4 in the treble and a half note F4 in the bass.

75 76 77

Foi as - sim Que\_a - pren - di a de - pen -

Detailed description: This system contains measures 75, 76, and 77. Measure 75 has a dotted quarter note G4 in the treble and a dotted quarter note F4 in the bass. Measure 76 has a half note G4 in the treble and a half note F4 in the bass. Measure 77 has a quarter note G4 in the treble and a quarter note F4 in the bass.

78 79 80

der do\_a - mor de Deus Que\_a - pren -

Detailed description: This system contains measures 78, 79, and 80. The key signature is three sharps (F#, C#, G#). Measure 78 has four chords: D major (F#, A, C#), D major (F#, A, C#), D major (F#, A, C#), and D major (F#, A, C#). Measure 79 has a whole note chord D major (F#, A, C#) with a fermata. Measure 80 has a whole note chord D major (F#, A, C#) with a fermata. The lyrics are: "der do\_a - mor de Deus Que\_a - pren -".

81 82 83 84

di a de - pen - der do\_a - mor de

Detailed description: This system contains measures 81, 82, 83, and 84. Measure 81 has four chords: D major (F#, A, C#), D major (F#, A, C#), D major (F#, A, C#), and D major (F#, A, C#). Measure 82 has a whole note chord D major (F#, A, C#) with a fermata. Measure 83 has a whole note chord D major (F#, A, C#) with a fermata. Measure 84 has a whole note chord D major (F#, A, C#) with a fermata. The lyrics are: "di a de - pen - der do\_a - mor de".

85 86 87 88 89 90

Deus Uh Uh

Detailed description: This system contains measures 85, 86, 87, 88, 89, and 90. Measure 85 has a whole note chord D major (F#, A, C#) with a fermata. Measure 86 has a whole note chord D major (F#, A, C#) with a fermata. Measure 87 has a whole note chord D major (F#, A, C#) with a fermata. Measure 88 has a whole note chord D major (F#, A, C#) with a fermata. Measure 89 has a whole note chord D major (F#, A, C#) with a fermata. Measure 90 has a whole note chord D major (F#, A, C#) with a fermata. The lyrics are: "Deus Uh Uh".

91 92 93

Uh de Deus.

Detailed description: This system contains measures 91, 92, and 93. Measure 91 has a whole note chord D major (F#, A, C#) with a fermata. Measure 92 has a whole note chord D major (F#, A, C#) with a fermata. Measure 93 has a whole note chord D major (F#, A, C#) with a fermata. The lyrics are: "Uh de Deus.".