

SANDÁLIAS

490

Sandals

John W. Walvoord
Don Wyrzten

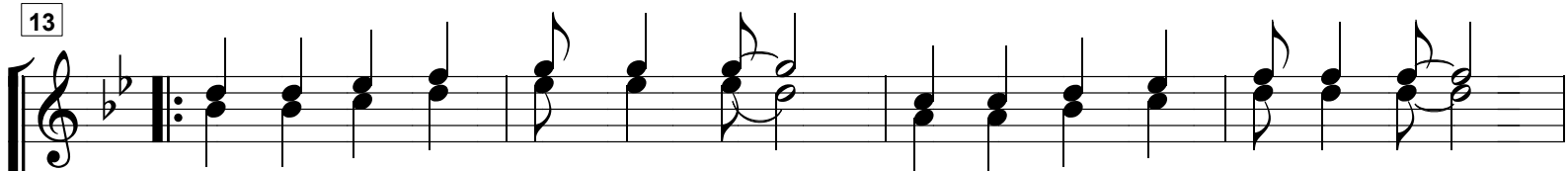
Arranjo-Marcelo Carvalho
01/02/2003

Musical notation for the first system of the song 'Sandals'. It consists of two staves: a treble clef staff and a bass clef staff. The key signature is one flat (Bb) and the time signature is 4/4. The melody in the treble staff features a repeating rhythmic pattern of eighth and quarter notes. The lyrics are: Du Du Du Du Du Du Du - Je. The bass staff provides a simple accompaniment with dotted quarter and eighth note patterns.

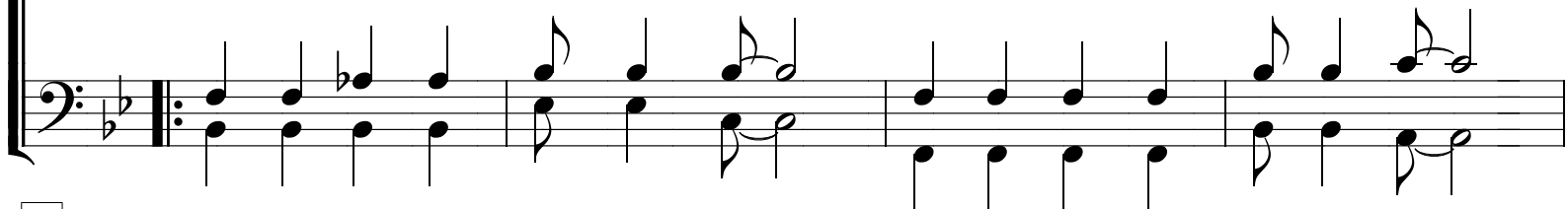
Musical notation for the second system of the song 'Sandals'. It consists of two staves. The treble staff contains a chordal accompaniment with a melodic line. The lyrics are: sus vei - o_a - ju - dar Co - nos - co ha - bi - tar. The bass staff continues the accompaniment with a steady eighth-note bass line.

Musical notation for the third system of the song 'Sandals'. It consists of two staves. The treble staff contains a chordal accompaniment with a melodic line. The lyrics are: E quem O en - con - trou Re - cor - da Seu o - lhar. The bass staff continues the accompaniment with a steady eighth-note bass line.

13



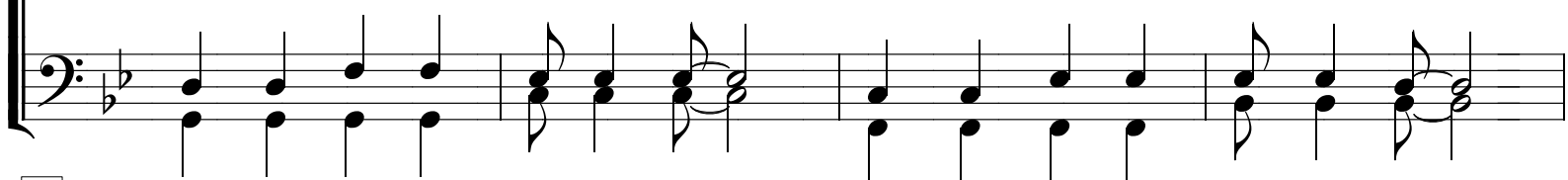
Só san-dá-lias em Seus pés O ca-mi-nho du-ro é



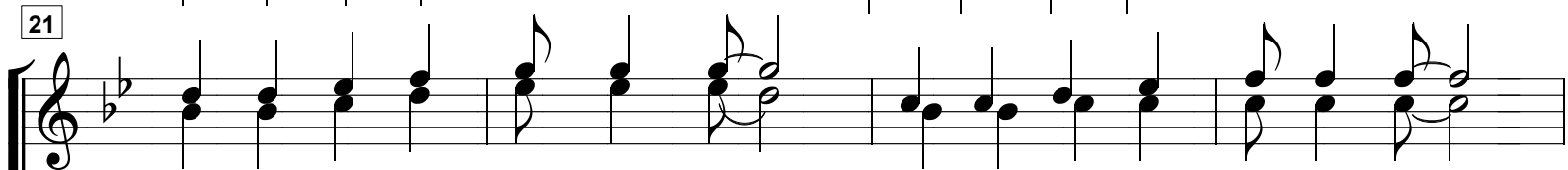
17



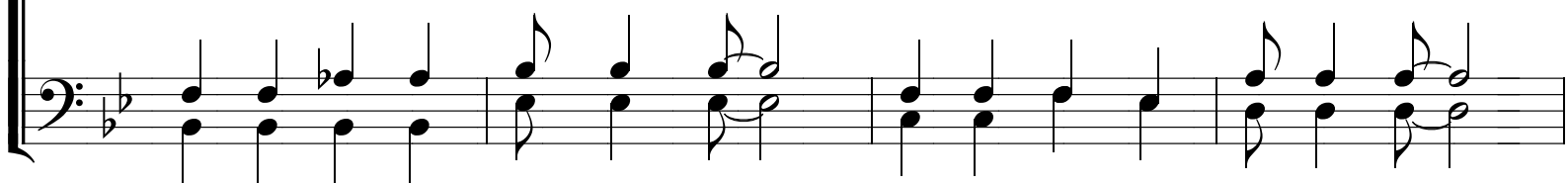
Cris-to vei-o me di-zer "Se-gue-Me a-té mor-rer"



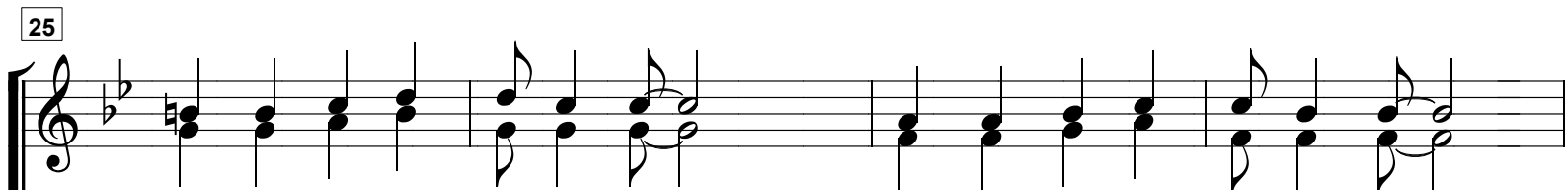
21



Só san-dá-lias em Seus pés O ca-mi-nho du-ro é



25



Cris-to vei-o me di-zer "Se-gue-Me a-té mo-rer



Meu fi-lho

A-

29

1.

A - té mor - rer Je -
A -

té mor - rer A - té mor - rer

32

sus não vei - oen - vão Pois dá - nos Seu per - dão
té mor - rer A - té mor - rer A - té mor - rer A -

35

té mor - rer A - E quem o a - cei - tou
té mor - rer A té mor - rer A -

38

2.

Tem paz e sal-va-ção
 té mor-rer A- té mor-rer A- té mor-rer

té mor-rer A-

42

A- té mor-rer A- té mor-rer A- té mor-rer

té mor-rer

Du

46

Du Du Du Du Uh!

Du Du Du Du